

Operetta2

What is the Operetta2 study?

Operetta2 is a research study for children and teenagers living with Multiple Sclerosis (MS). This study will look at the effects, good and bad, of a medicine that may be able to help children and teenagers living with MS.












Who will take part?

- **171** children and teenagers living with MS
- Ages **10-17** years old

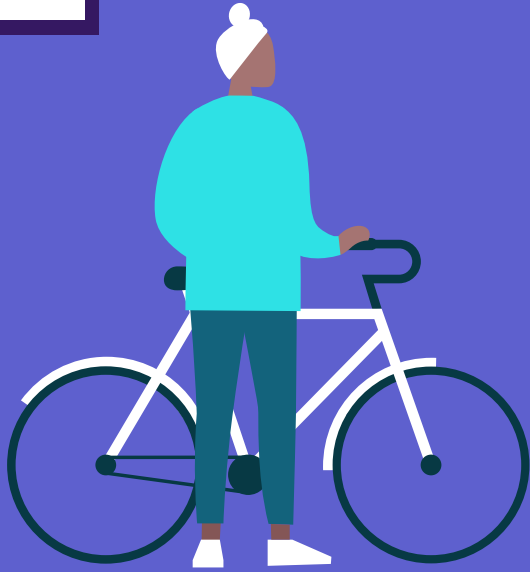
What will happen if I am in this study?

The study doctor will check to make sure the study is right for you.

You will have some tests and procedures done to make sure you can take part in the study:

-  Examination of parts of your body, like your head, eyes, ears and nose
-  Measure your height and weight
-  Take your temperature
-  Measure how fast your heart is beating
-  Measure how fast you breathe in and out
-  Measure the pressure of your blood in your arm
-  Take some blood from your arm
-  Collect urine (wee) samples
-  Do an MRI that takes a picture of your brain

QR CODE
PLACEHOLDER



You will visit the study doctor's office **every 3 months** so the study doctor can do some tests and procedures to see how you are doing.

In this study you will be given **two** study medicines:

- One **'real'** (ocrelizumab or fingolimod) AND
- One **'fake'** that looks real but does not have an active medicine, this is called a placebo

Every six months (twice a year) you will visit the study doctor's office to receive a dose of **ocrelizumab or the placebo** that will be given slowly into your arm (this is called an infusion).

You will also be given **fingolimod or the placebo** as a capsule (like a pill) to take **every day at home**.

How long would I be in the study?

You would be in the study for at least **6 months** but maybe longer.

If you join the study and decide you want to stop, you can at any time for any reason!



Who can answer my questions about the study?

Talk to your parents or carer or the study doctor or nurse if you have any questions about the study. They will answer all of your questions.

Operetta2 study team contact information

Name:

Location:

Phone number:

